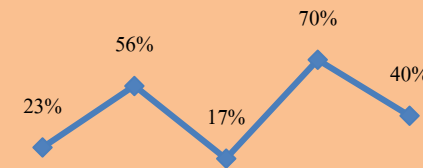




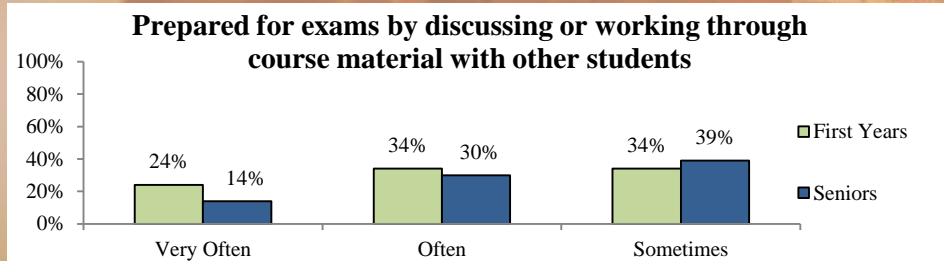
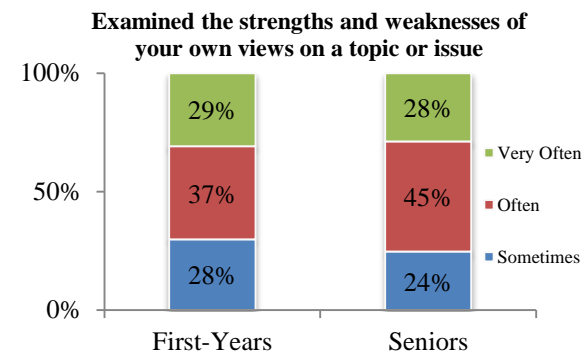
# The Monthly Stat

September 2015 - Brought to you by the Office of Institutional Effectiveness - Contact: [inst-effectiveness@hamline.edu](mailto:inst-effectiveness@hamline.edu)



The National Survey of Student Engagement (NSSE) was administered in the Spring of 2015 to first-year students and seniors. It seeks to measure student experiences and institutional practices associated with student learning. For more information, please follow the links below (a log-in is required to access reports on the Hamline site).

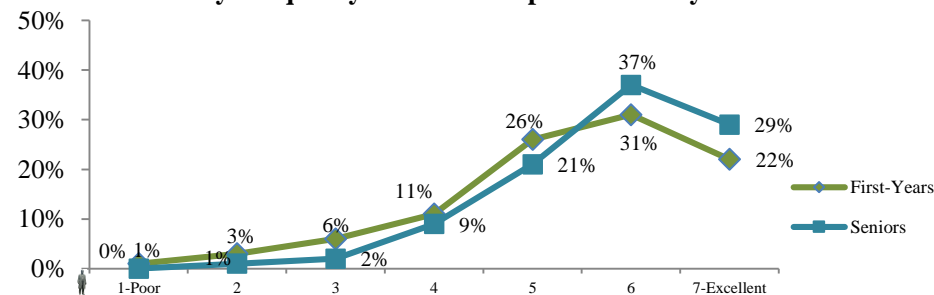
[www.hamline.edu/offices/institutional-effectiveness/survey-results/](http://www.hamline.edu/offices/institutional-effectiveness/survey-results/)  
[www.nsse.iub.edu](http://www.nsse.iub.edu)



24% of *first-year students* attended an *art exhibit*, *play* or other arts performance (dance, music, etc.) while 30% of *seniors* did



**What is your quality of relationships with faculty members?**



Like what you saw here? Please contact us for more details about the latest NSSE findings!