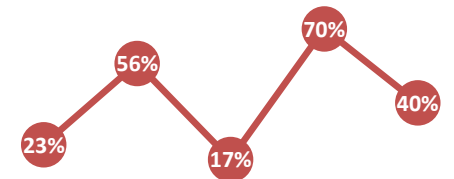




The Monthly Stat

Brought to you by the Office of Institutional Effectiveness
Contact: inst-effectiveness@hamline.edu



MARCH 2020

March



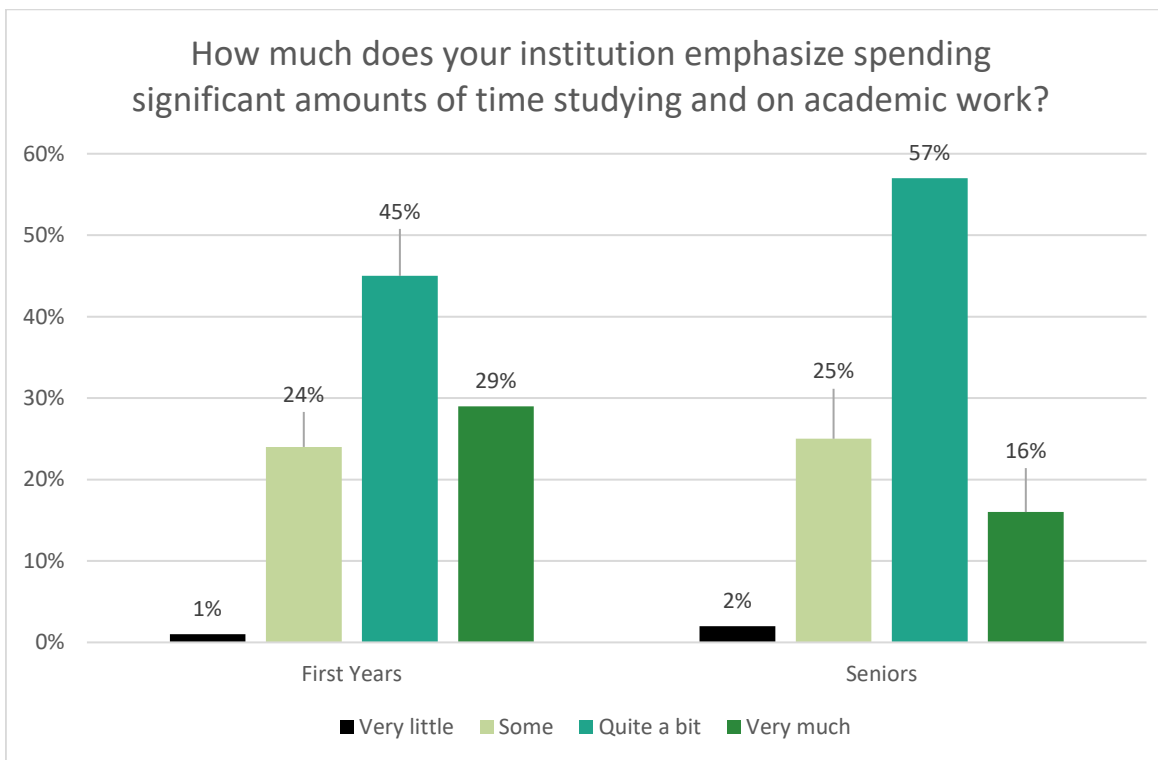
2019 National Survey of Student Engagement Responses

First Years and Senior Responses

During 2019, how much has your coursework emphasized memorizing course material?

Responses:
Very little = 4%
Some = 31%
Often = 48%
Very much = 17%
(First-Years only)

How much does your institution emphasize spending significant amounts of time studying and on academic work?



67% of Seniors in 2019 stated that some of their courses at Hamline have included a community-based project (service-learning)



Where's Bishop Leo?

