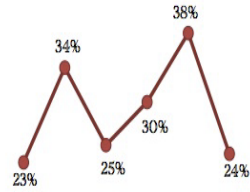




**HAMLIN
UNIVERSITY**

The Monthly Stat



March 2015 - Brought to you by the Office of Institutional Research - Contact: inst-research@hamline.edu

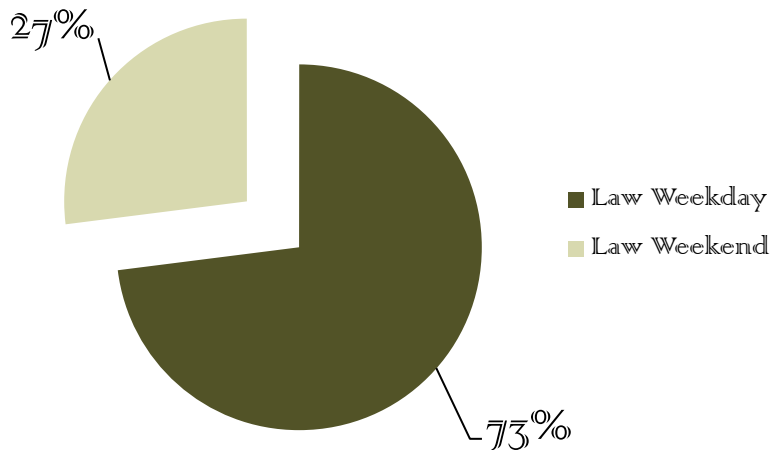
Mitchell|Hamline School of Law

In honor of the Mitchell|Hamline School of Law combination, this month's issue features demographics and information pertaining to the law school.

For more information, visit www.hamline.edu/law/mitchell-hamline-school-of-law/home/

Source: Census Day Spring 2015

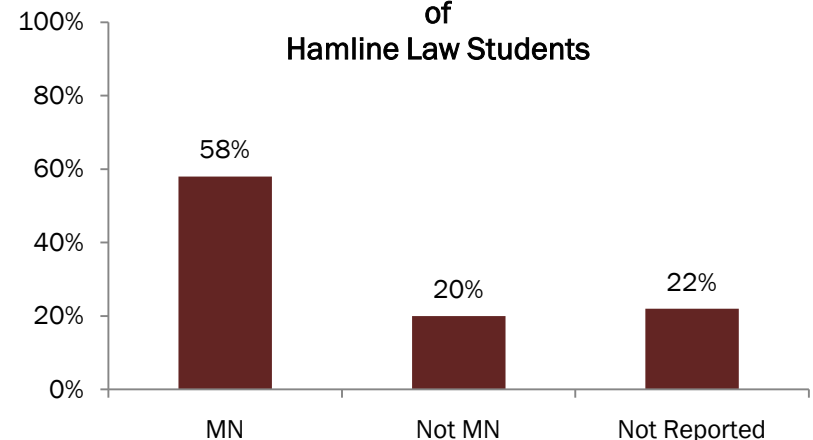
Law School Enrollment



10% of students in the law school have received an undergraduate or graduate degree from Hamline.

As of spring 2015, there were 304 students enrolled in Hamline's JD program

Hometown State of Hamline Law Students



The average age of Hamline Law students is 29.5, with a range of 21 years – 63 years

Where's Bishop Leo?

