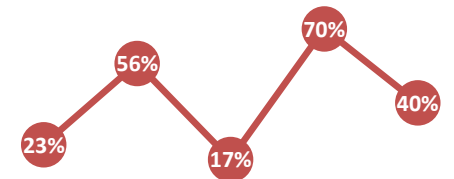




The Monthly Stat

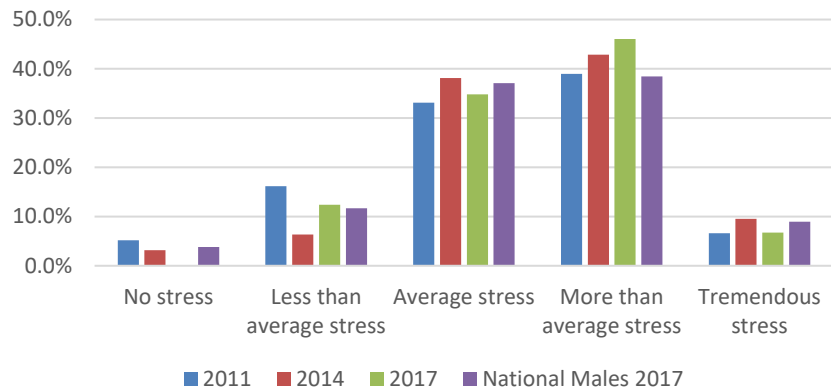
Brought to you by the Office of Institutional Effectiveness
Contact: inst-effectiveness@hamline.edu



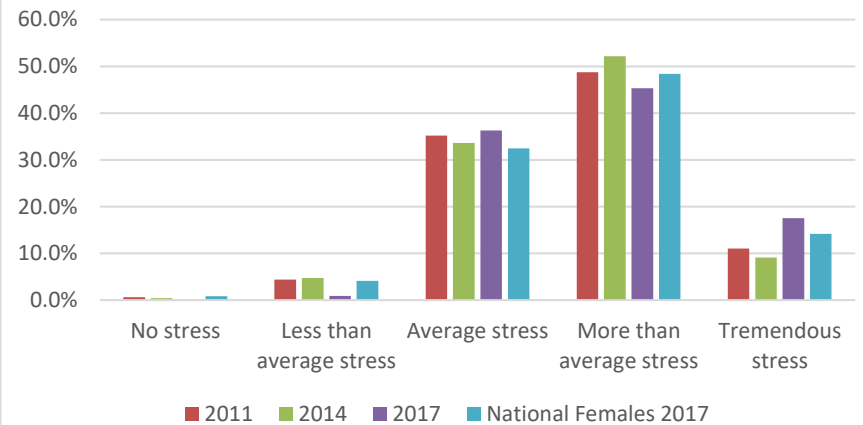
FEBRUARY 2020

February

Stress Reported by Hamline Males Trends (2011, 2014, 2017) and National Benchmarks



Stress Reported by Hamline Females Trends (2011, 2014, 2017) and National Benchmarks



Both Hamline females and males were most likely to describe their weight as "About the right weight" (48.3% of females, 46.1% of males).

