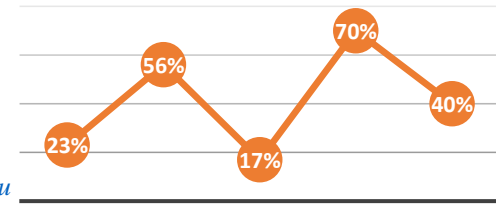


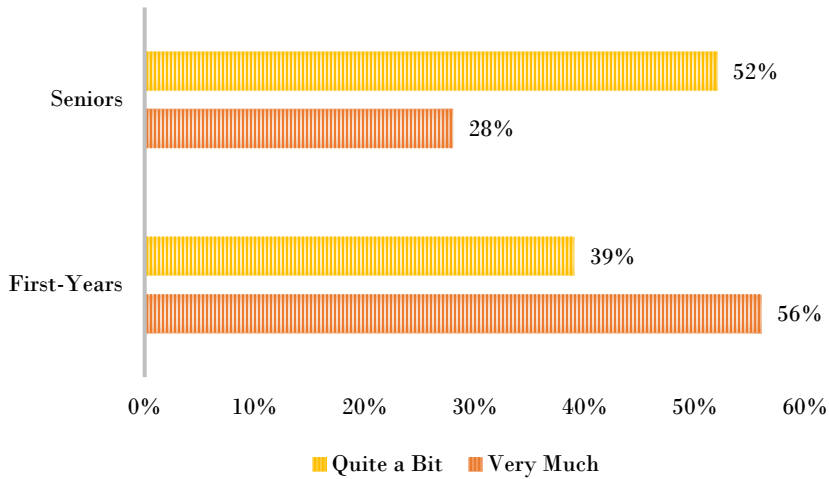


The Monthly Stat

September 2016 - Brought to you by the Office of Institutional Effectiveness - Contact: inst-effectiveness@hamline.edu



How much has your experience at this institution contributed to your knowledge, skills, and personal development in the following areas?

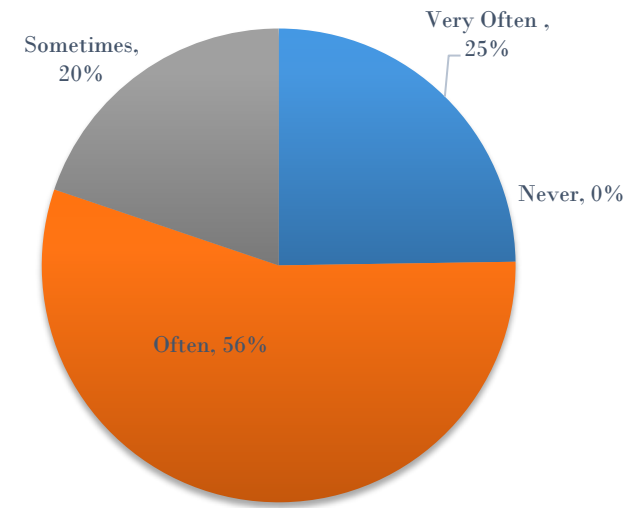


Class is IN SESSION!

Take a look at the National Survey of Student Engagement (administered in Spring 2016) results to see what students are saying about their classroom experiences! A full report will be available later this semester on our website!

During the current school year, about how often have you identified key information from reading assignments?

First-Years



Where's Bishop Leo?



During the current school year, about how many papers, reports or other writing tasks of the following length have you been assigned?

Up to 5 pages

