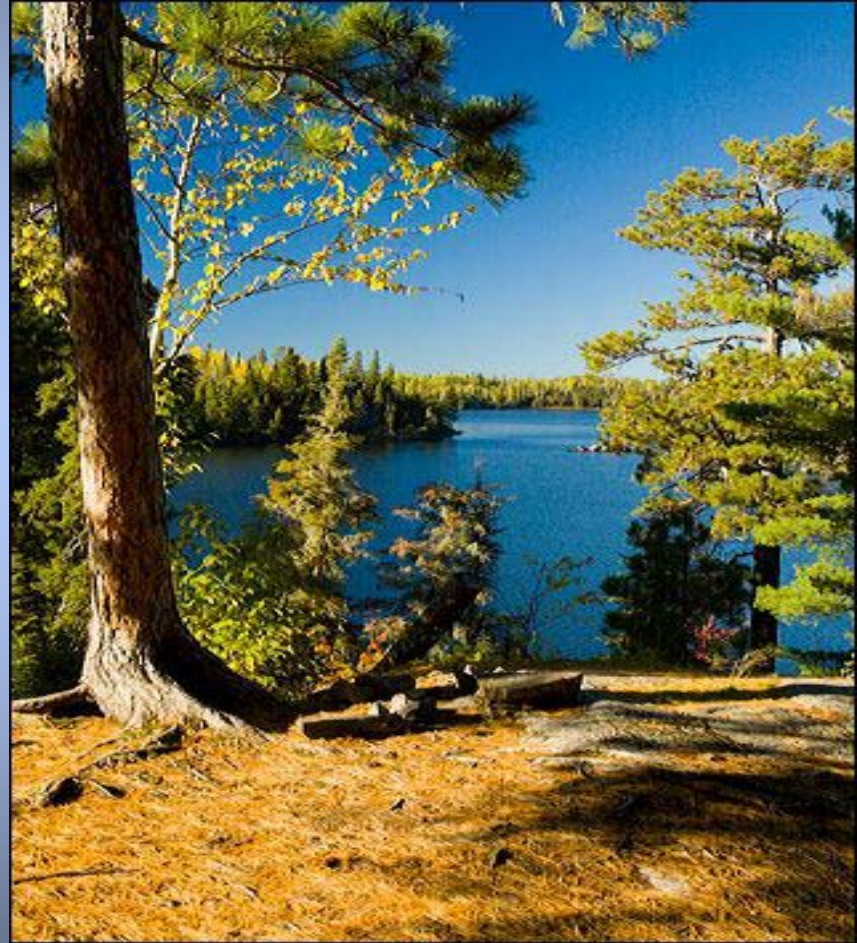


Legislative Report on Civic Engagement for TMDL Development



Clean Water Legacy Act

- 114D.35 – TMDL Public and Stakeholder participation
 - Shall encourage participation by public and stakeholders
 - MPCA shall seek broad and early public and stakeholder participation



Clean Water Council

- CWC - Civic Engagement Workgroup
 - ▣ Studied the most effective methods for engaging citizens and stakeholders
 - ▣ Developed guidelines for engaging citizens and stakeholders
 - ▣ An outline of what to include, not how it is to be accomplished - the core of this report

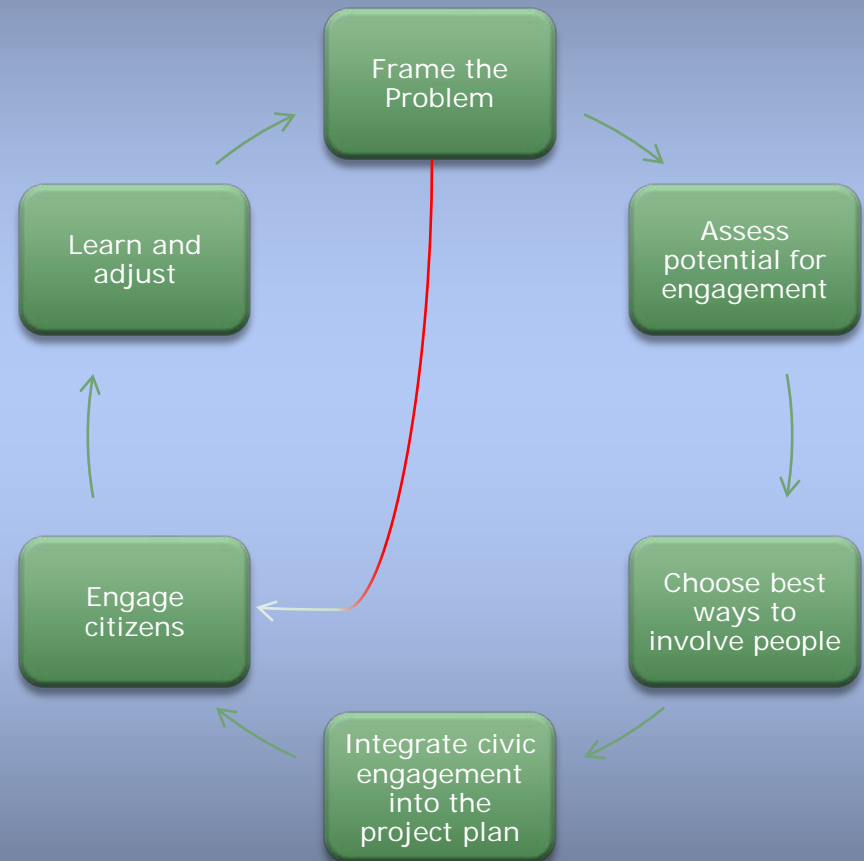
Engage Citizens

WQ is about people taking action, so we must effectively:

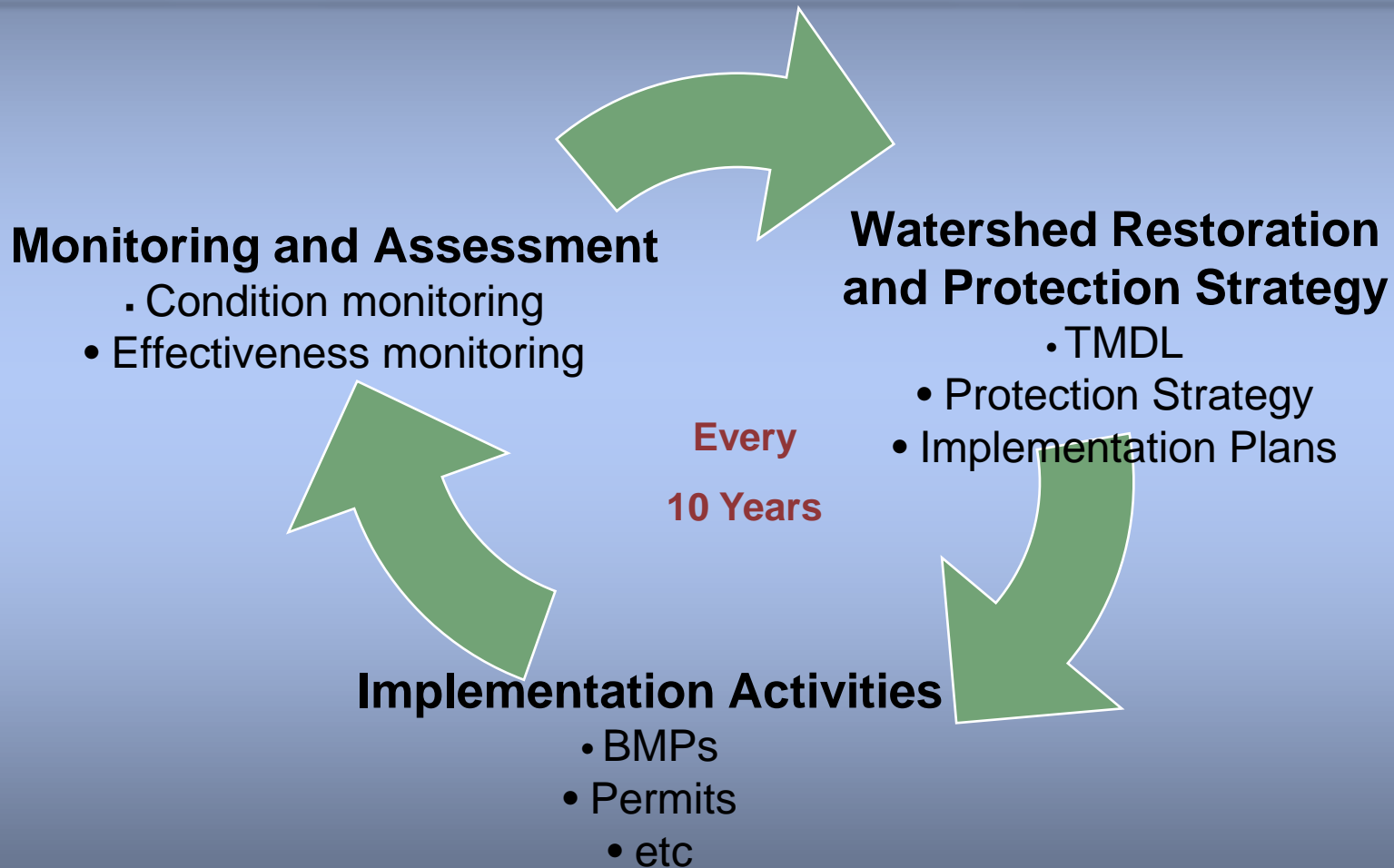
- engage average citizens in solving complex problems
- encourage citizens to be leaders among their peers

Resulting in:

- citizens “owning” the problem and the solutions
- citizens lead change, rather than act as passive participants

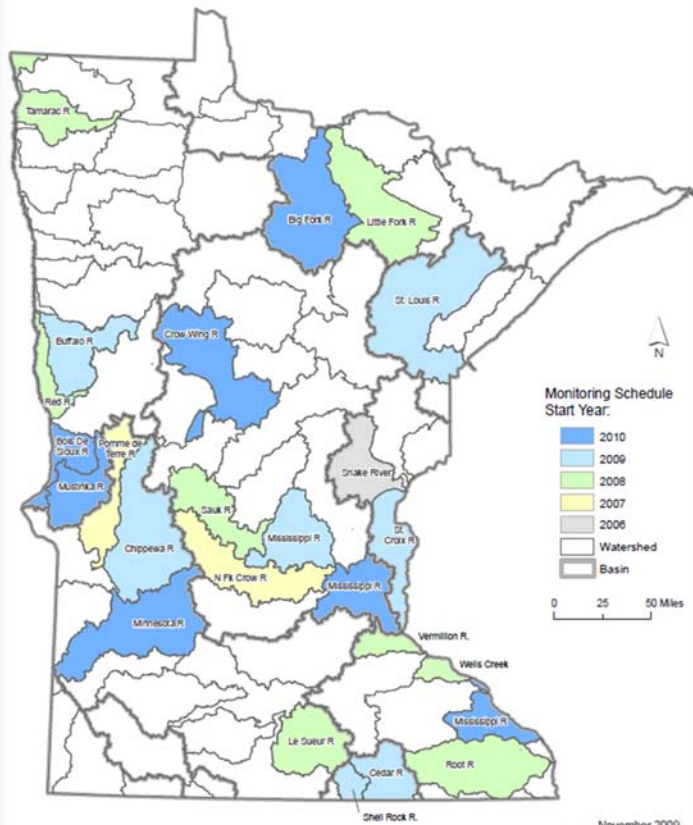


Rotating Through the Major Watersheds on a Ten Year Cycle



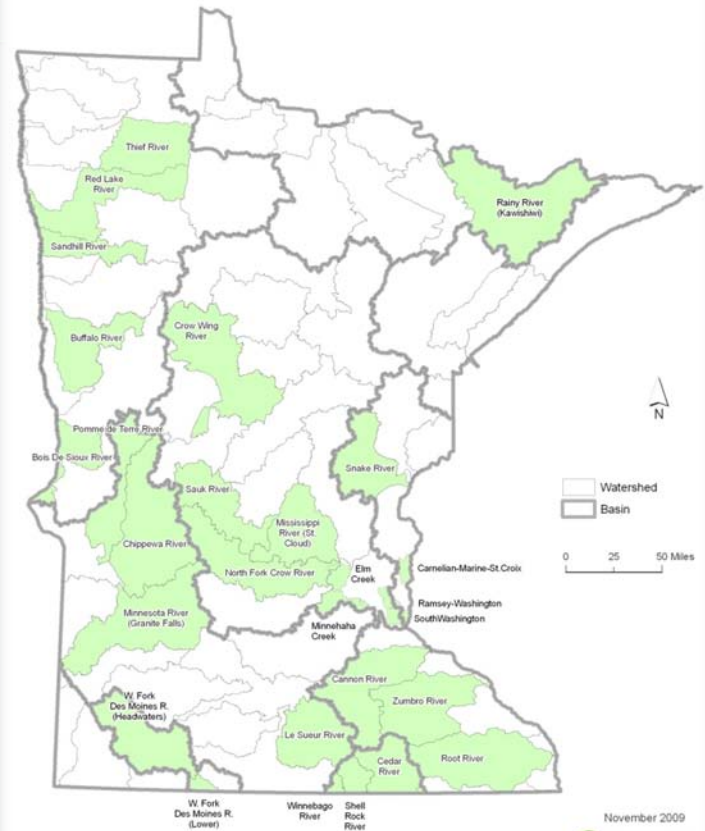
Where We Are Beginning

Intensive Watershed Monitoring



November 2009
Minnesota Pollution Control Agency

Areas with Watershed Approach Projects Underway or Planned: FY10-11 Biennium



November 2009
Minnesota Pollution Control Agency

Civic Engagement – A Shift

- Shifting citizen and stakeholder involvement on the continuum:
 - From reactive to proactive
 - From individual to cooperative and collaborative
 - From assuming to asking what works
 - From typical “public meetings” to engaging activities (water monitoring, GIS visualizations, social networking, etc.)


Broader Context for Education

- CWC recommendations for FY10-11
 - Education - \$8M, **4.35%**
 - ACTUAL – 0

 - Civic Engagement - \$1.8M TMDL and Imp.
 - ACTUAL - \$250K

Funding Opportunities

- Section 319 Grants – R&D, Education
 - ~\$1M/yr, 5-10 projects – mixed funding history for education projects
- Civic Engagement efforts in TMDL/watershed projects - not competitive
- BWSR Implementation grants?



Glenn Skuta

651-757-2730

glenn.skuta@state.mn.us

