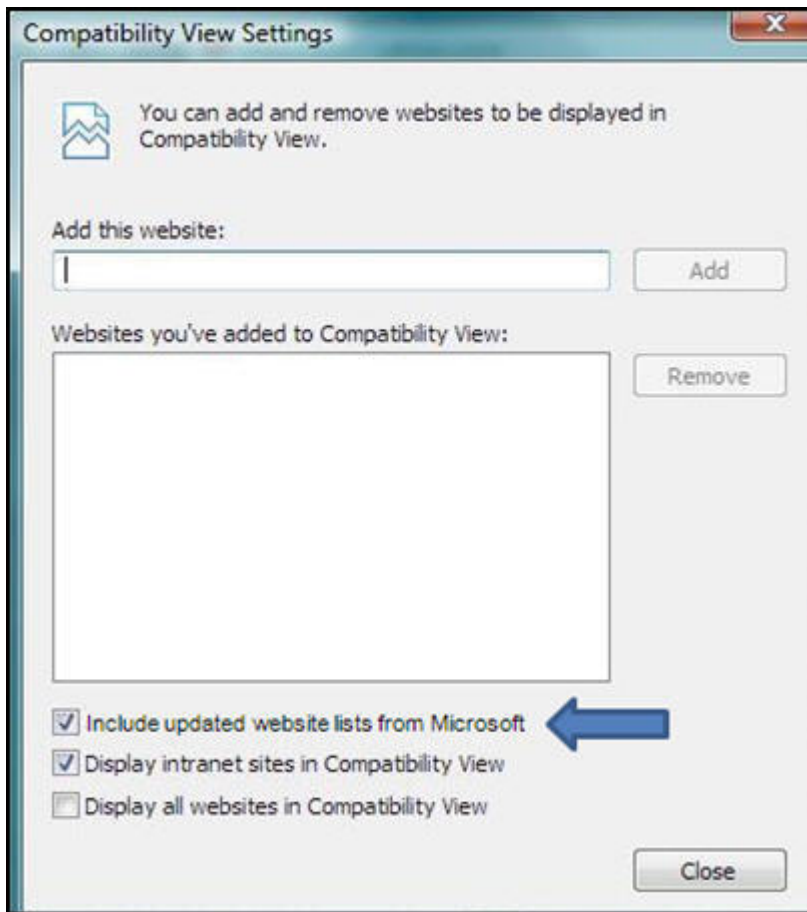


## How to Set Compatibility View Settings in Internet Explorer 8:

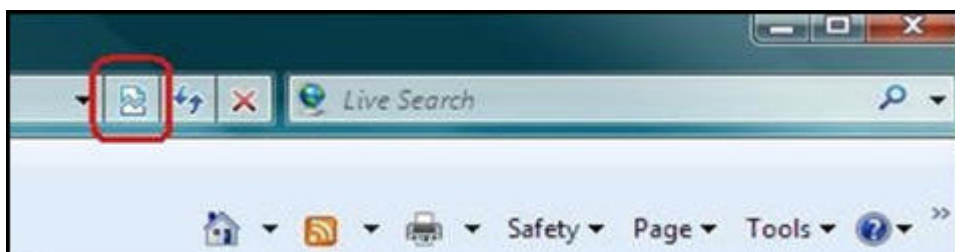
1. **Launch** Internet Explorer
2. Select **Tools**
3. Select **Compatibility View Settings**



4. Type **\*.blackboard.com** in the **Add this website:** text box
5. Click **Add**
6. Do the same thing for **\*.hamline.edu**
7. Click **Close**
8. **Restart** Internet Explorer

## How to Set Compatibility View Settings in Internet Explorer 8:

1. **Launch** Internet Explorer
2. Click the **Compatibility View Button** located near the **Address Bar**.



***Note:** The page may refresh so you want to do this **BEFORE** you enter a test. If you are in the middle of a test, the refresh may kick you out of it.*